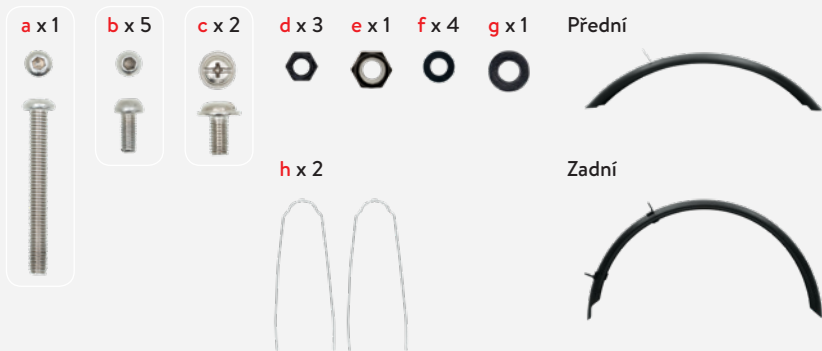
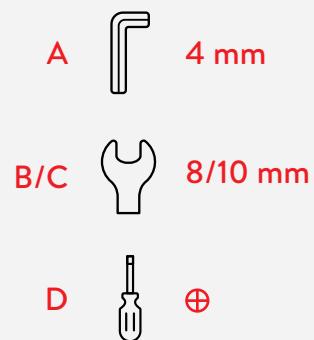


# woom™ 6 BLATNÍKY

## Sada



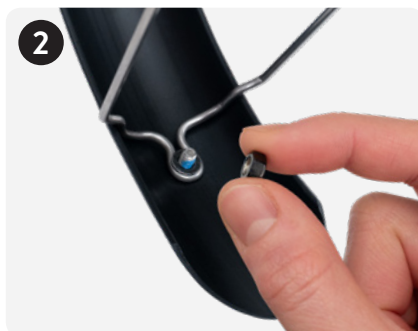
## Nářadí



## Přední



c + h + f



c + h + f + d



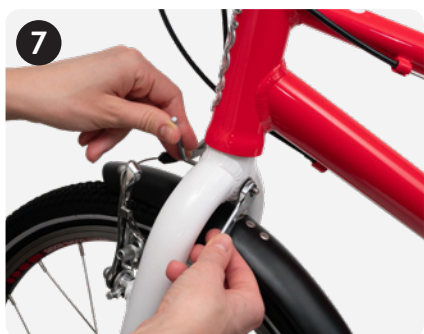
utáhněte pomocí B + D



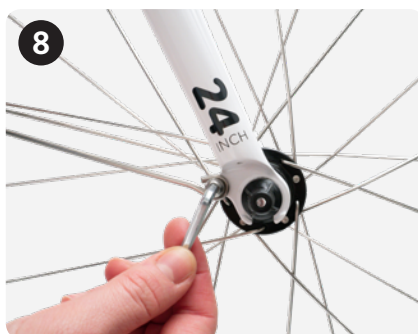
a



a + g + e



utáhněte pomocí A + C



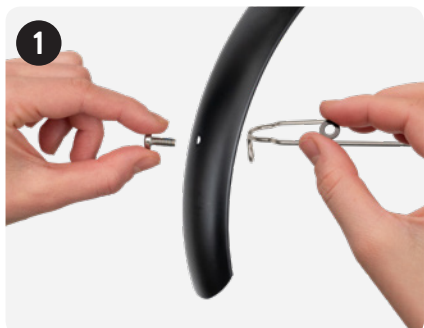
utáhněte b na obou stranách pomocí A

Návod k montáži  
na videu

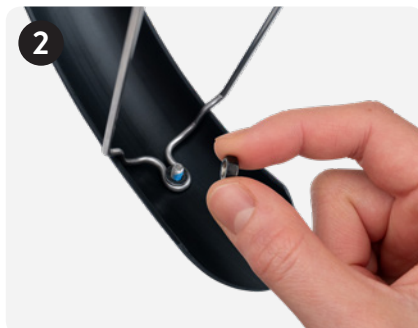


nebo  
woombikes.com

## Zadní



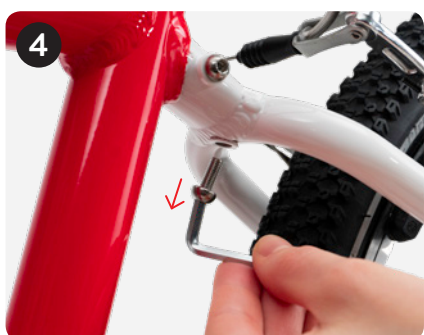
c + h + f



c + h + f + d



utáhněte pomocí B + D



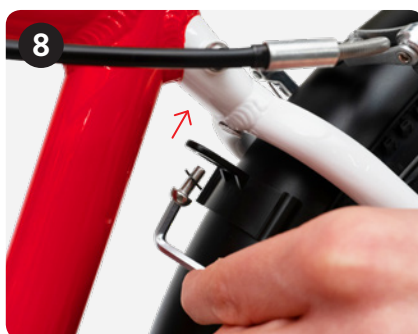
Odstraňte šroub pomocí A



b + f + d



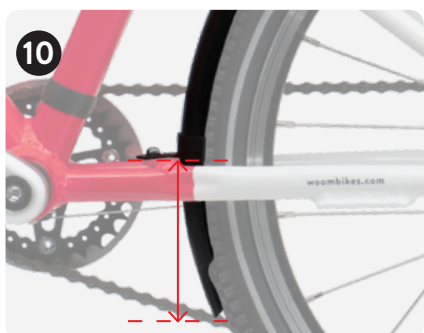
utáhněte pomocí B + A



A + f



utáhněte pomocí A



vzdálenost: 5-8 cm!



utáhněte b na obou stranách pomocí A

Návod k montáži  
na videu



nebo  
woombikes.com